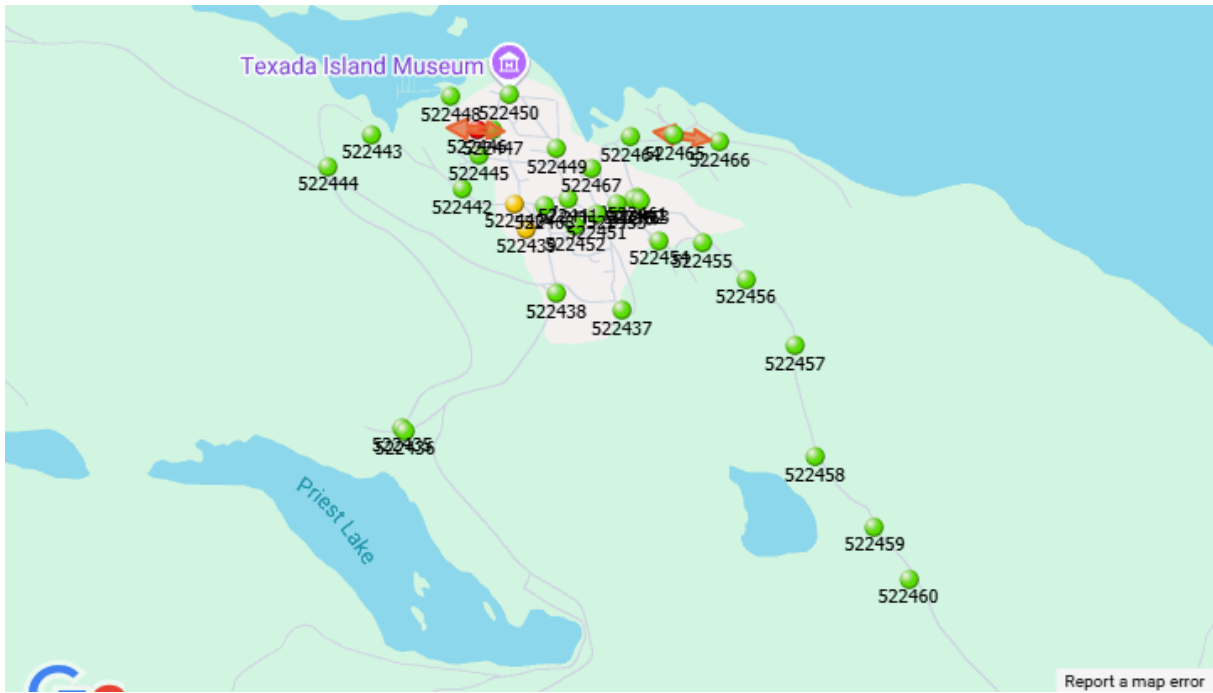


ZONSCAN NET Leak Detection Report

Van Anda Improvement District, BC Jan 7, 2025 (Report created on Jan 23, 2025, 1:15:42 PM)



Correlations

Quality	Location	Logger 1	Logger 2	Dist. L1	Dist. L2	Center Dist.	Pipe Len.	Comments
100.0	1986 Nicholas Ave, 49.758947° -124.560302°	522446	522447	4.0 m	55.6 m	-25.8 m	59.5 m	
90.0	5270 Blewett St, 49.758702° -124.549738°	522465	522466	37.1 m	129.9 m	-46.4 m	167.0 m	

Logger Noise

Leak Score	Location	Logger	Min. Noise	Comments
96	1986 Nicholas Ave 49.758949° -124.560357°	522446	48.0	
53	1108 Gillies Bay Rd 49.755673° -124.557811°	522439	32.5	
49	1988 Marble Bay Rd 49.756495° -124.558411°	522440	21.0	
38	Texada Island 49.757663° -124.554506°	522467	31.0	
30	5270 Blewett St 49.758752° -124.550248°	522465	36.0	
17	5322 coleborn st 49.758915° -124.559531°	522447	11.5	
17	High Rd 49.754003° -124.546623°	522456	32.5	
9	High Rd 49.745848° -124.540034°	522459	12.5	
8	2402 Van Anda St	522466	11.5	

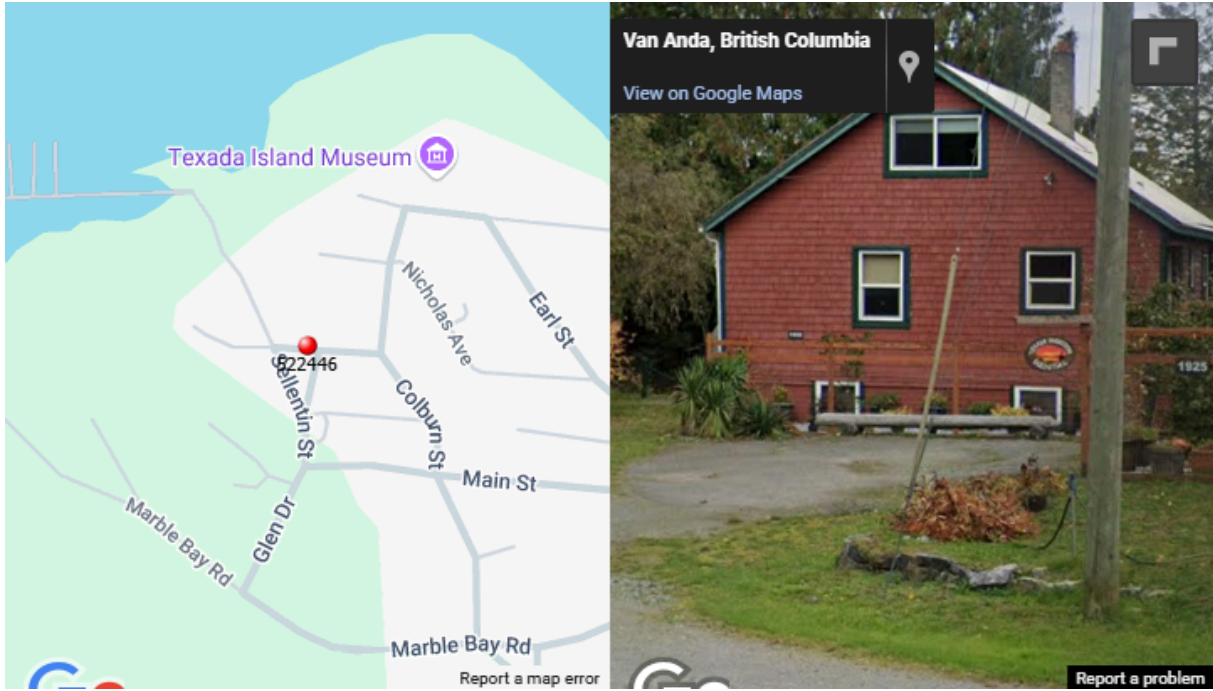
ZONSCAN NET Leak Detection Report

Leak Score	Location	Logger	Min. Noise	Comments
	49.758528° -124.547952°			
5	High Rd 49.751802° -124.544104°	522457	15.5	
0	Priest Lake Rd 49.749130° -124.564176°	522435	1.0	
0	Duker Rd 49.749021° -124.564027°	522436	0.0	
0	Emily Lake Trailhead 49.752968° -124.552941°	522437	0.0	
0	1300 Gillies Bay Rd 49.753552° -124.556292°	522438	0.0	
0	2056 Marble Bay Rd 49.756664° -124.555689°	522441	0.0	
0	Main St 49.756975° -124.561109°	522442	0.0	
0	1844 Marble Bay Rd 49.758784° -124.565693°	522443	1.0	
0	1877 Blubber Bay Rd 49.757715° -124.567941°	522444	0.0	
0	5271 Coleborn Street 49.758090° -124.560254°	522445	0.0	
0	201 Sturt Bay Rd 49.760012° -124.561675°	522448	0.0	
0	5282 Para St 49.758301° -124.556258°	522449	0.0	
0	2003 Waterman Ave 49.760067° -124.558724°	522450	0.0	
0	5105 Copper Queen St 49.756144° -124.554243°	522451	4.0	
0	2056 Marble Bay Rd 49.755748° -124.555328°	522452	0.0	
0	2170 Van Anda Ave 49.756457° -124.553209°	522453	0.5	
0	5032 Copper Queen St 49.755283° -124.551028°	522454	5.0	
0	5032 Copper Queen St 49.755217° -124.548856°	522455	0.0	
0	PFX4+7Q Van Anda 49.748140° -124.543105°	522458	0.0	
0	PFV6+MM Van Anda 49.744145° -124.538312°	522460	3.0	
0	5082 Columbia St 49.756716° -124.552158°	522461	0.0	
0	5082 Columbia St 49.756637° -124.552321°	522462	0.0	
0	2302 Wall St 49.756612° -124.552038°	522463	0.5	
0	Erickson Beach 49.758705° -124.552494°	522464	7.0	
0	2056 Marble Bay Rd 49.756439° -124.556891°	522468	0.0	

ZONSCAN NET Logger Noise Report

Van Anda Improvement District, BC Jan 7, 2025 (Report created on Jan 23, 2025, 11:48:25 AM)

Logger: 522446

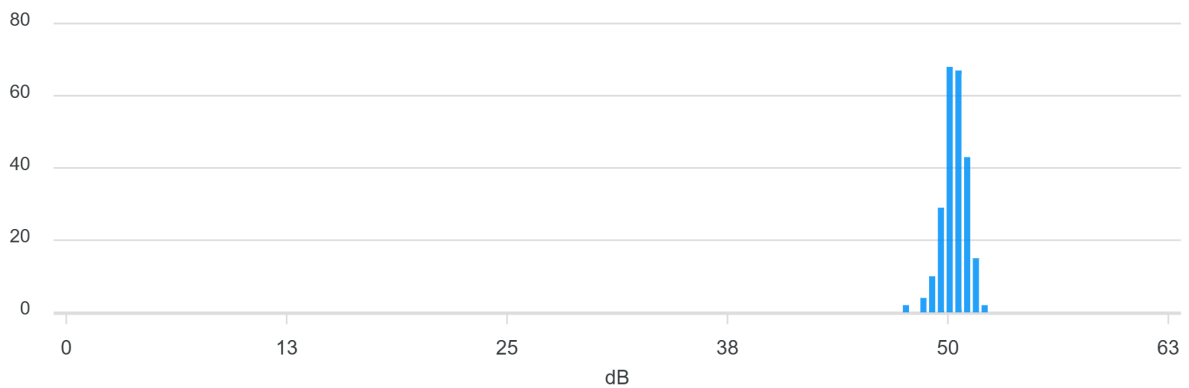


Leak Score

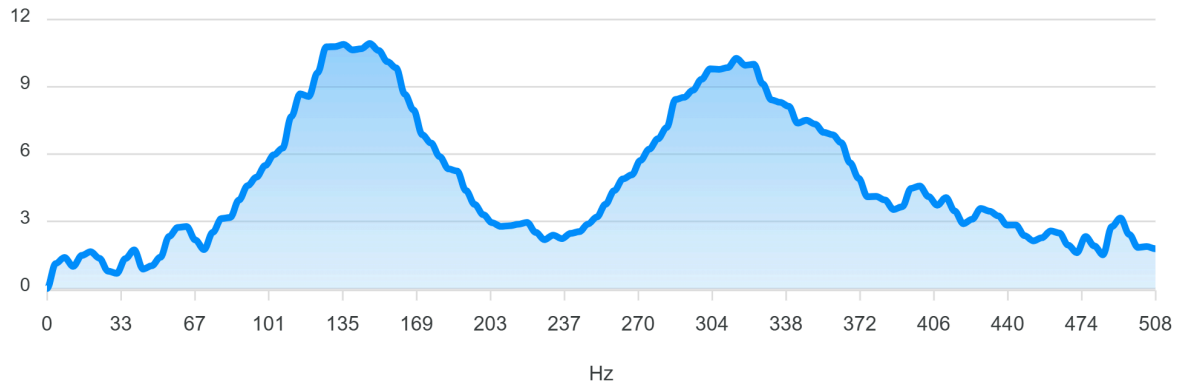
Leak Score	Location	Logger	Min. Noise	Env. Noise	Comments
96	1986 Nicholas Ave, 49.758949°, -124.560357°	522446	48.0		201 Sturt Bay Rd

Charts

Amplitude Distribution Histogram



Sound Signal Spectrum



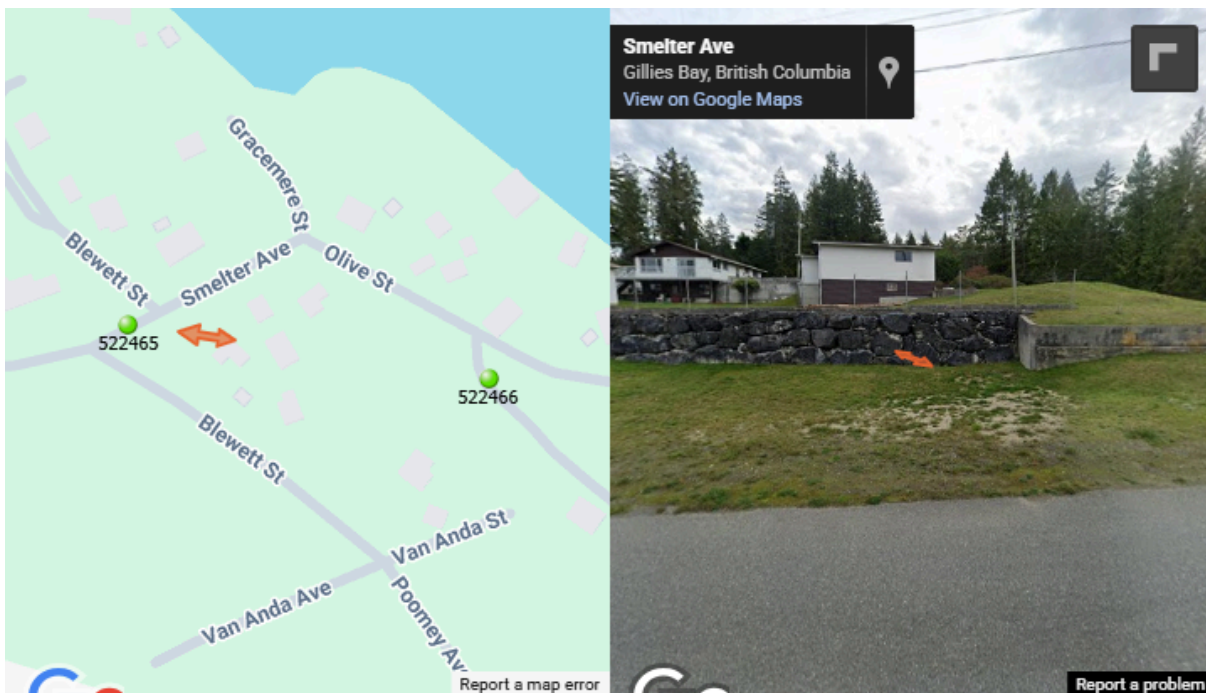
Additional Information

Ground microphoning found significant noise 26' - 30' from the service box (28' being the loudest noise). The noise was heard 4' 4" out from the fence post. - The left service connection should be dug up, for a leak suspected to be on the utility side.

ZONSCAN NET Correlation Report

Van Anda Improvement District, BC Jan 7, 2025 (Report created on Jan 23, 2025, 1:02:18 PM)

Correlation: 522465 - 522466

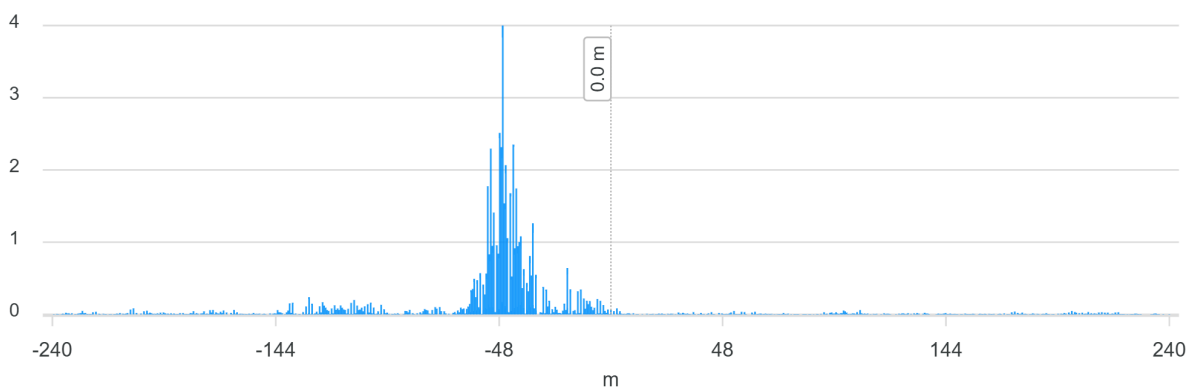


Correlation

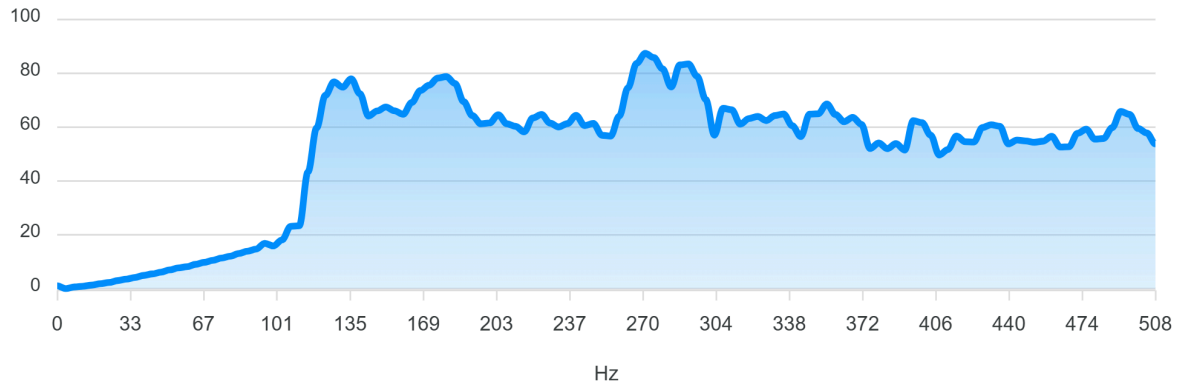
Quality	Location	Logger 1	Logger 2	Dist. L1	Dist. L2	Center Dist.	Pipe Len.	Comments
90.0	5270 Blewett St, 49.758702° -124.549738°	522465	522466	37.1 m	129.9 m	-46.4 m	167.0 m	

Graphs

Cross Correlation



Correlation Spectrum



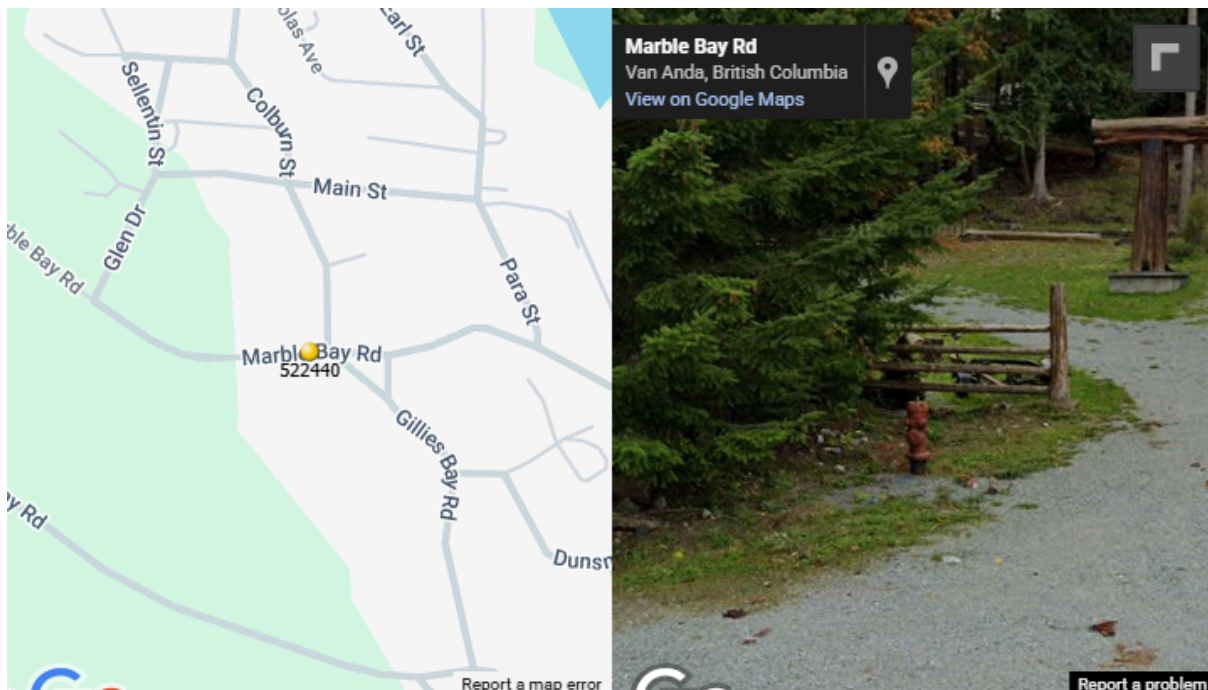
Additional Information

A watermain leak is suspected to be located in front of 24166 Smelter Ave. Specifically, in the area of the previous repair where the asphalt is cracked. In addition to this leak, the service connection to 24166 is currently shutoff, and leaks if it not in the current position. On the customers side, it is currently being held on by two hose clamps.

ZONSCAN NET Logger Noise Report

Van Anda Improvement District, BC Jan 7, 2025 (Report created on Jan 23, 2025, 12:54:17 PM)

Logger: 522440

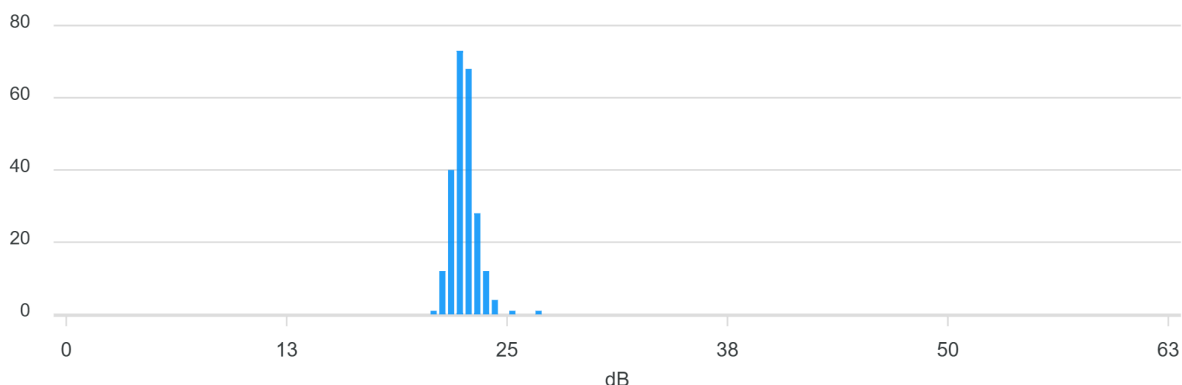


Leak Score

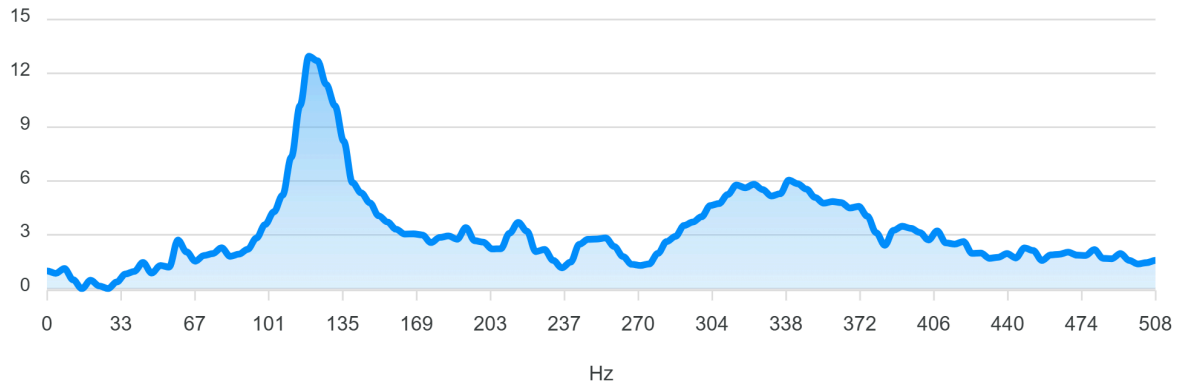
Leak Score	Location	Logger	Min. Noise	Env. Noise	Comments
49	1988 Marble Bay Rd, 49.756495°, -124.558411°	522440	21.0		

Charts

Amplitude Distribution Histogram



Sound Signal Spectrum



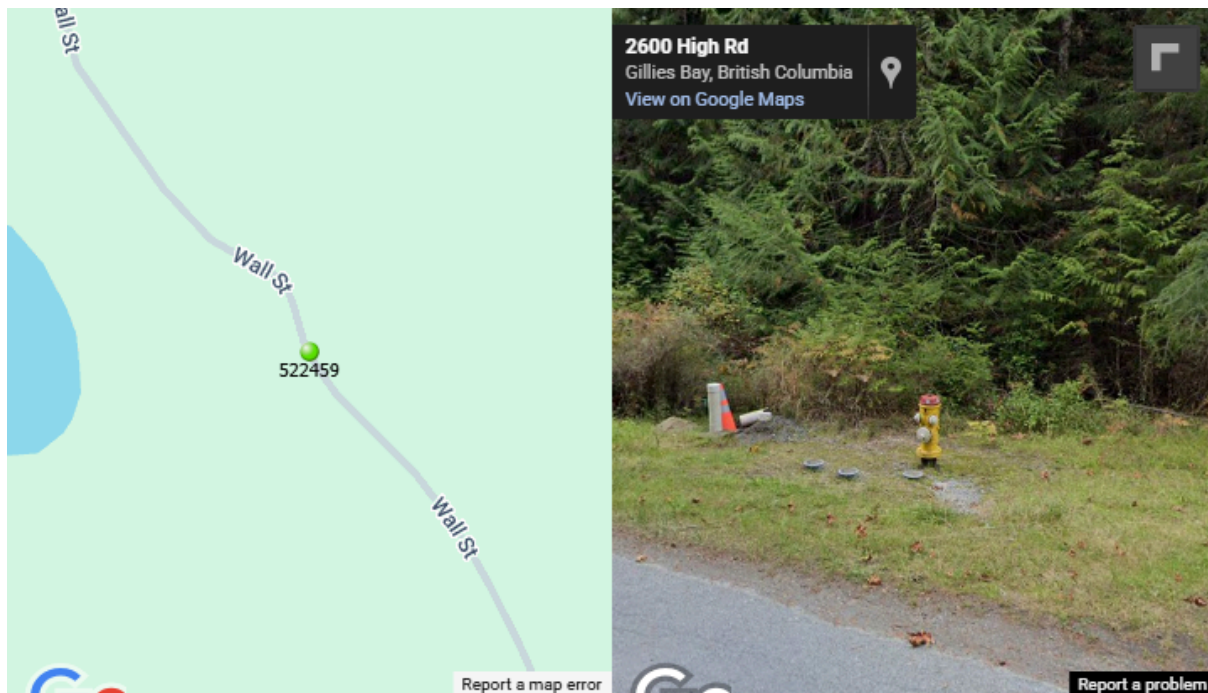
Additional Information

The first hydrant across the road from Mary Mary's Café is leaking when in the closed position.

ZONSCAN NET Logger Noise Report

Van Anda Improvement District, BC Jan 7, 2025 (Report created on Jan 23, 2025, 1:04:54 PM)

Logger: 522459

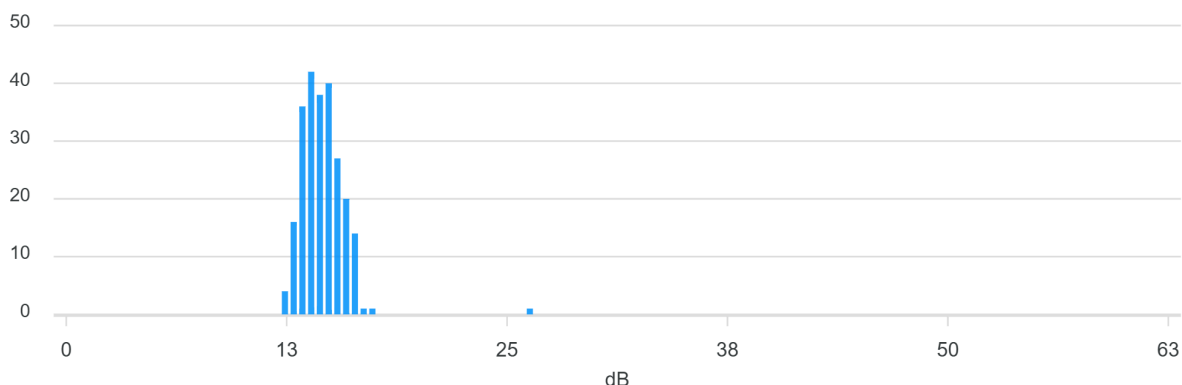


Leak Score

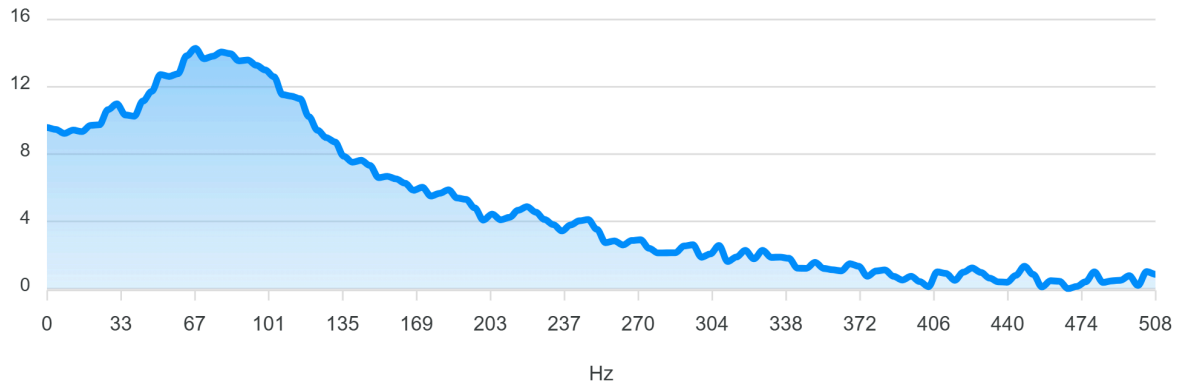
Leak Score	Location	Logger	Min. Noise	Env. Noise	Comments
9	High Rd, 49.745848°, -124.540034°	522459	12.5		

Charts

Amplitude Distribution Histogram



Sound Signal Spectrum



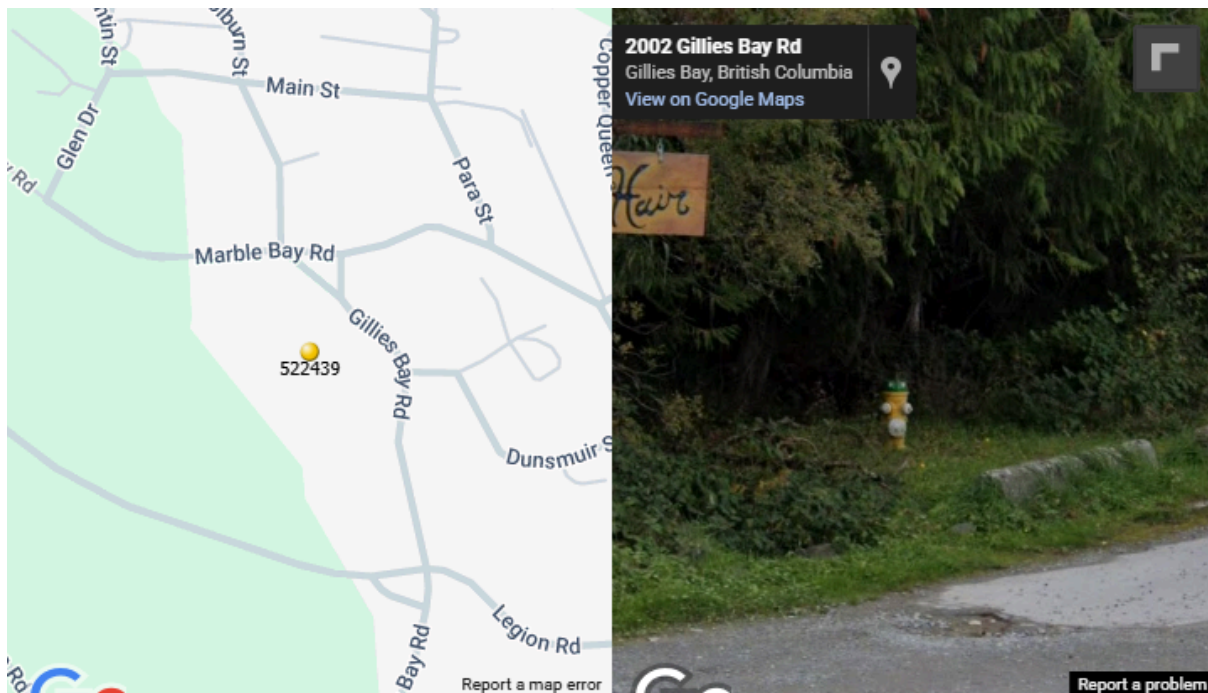
Additional Information

The fire hydrant is confirmed to be leaking when in the closed position.

ZONESCAN NET Logger Noise Report

Van Anda Improvement District, BC Jan 7, 2025 (Report created on Jan 23, 2025, 12:49:06 PM)

Logger: 522439

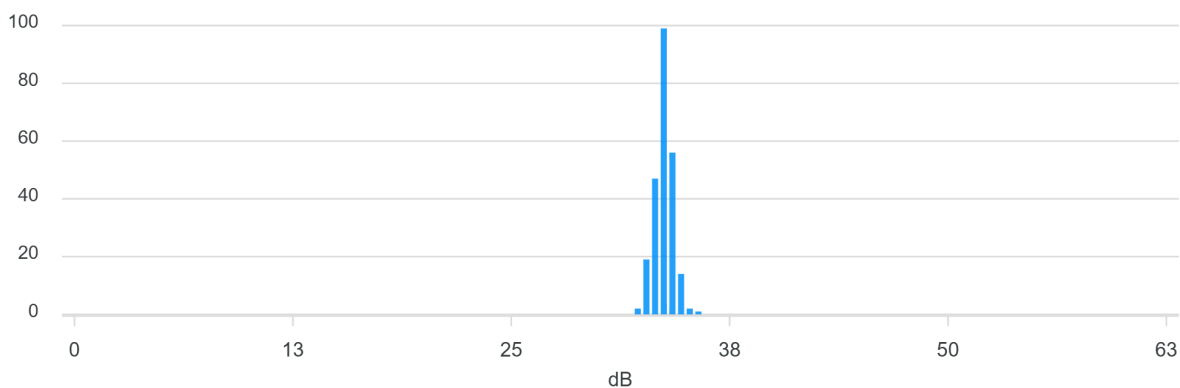


Leak Score

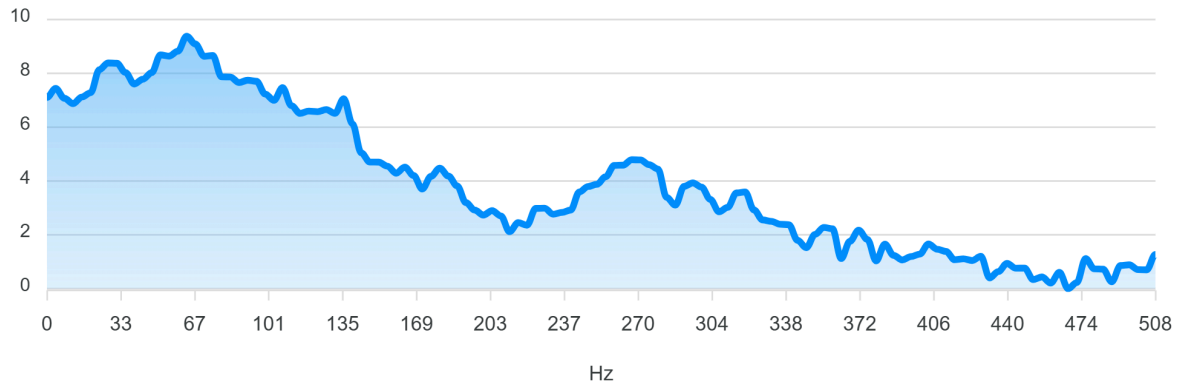
Leak Score	Location	Logger	Min. Noise	Env. Noise	Comments
53	1108 Gillies Bay Rd, 49.755673°, -124.557811°	522439	32.5		

Charts

Amplitude Distribution Histogram



Sound Signal Spectrum



Additional Information

The fire hydrant on the corner of the parking lot to the Texada Island Inn, is confirmed to be leaking when in the closed position.